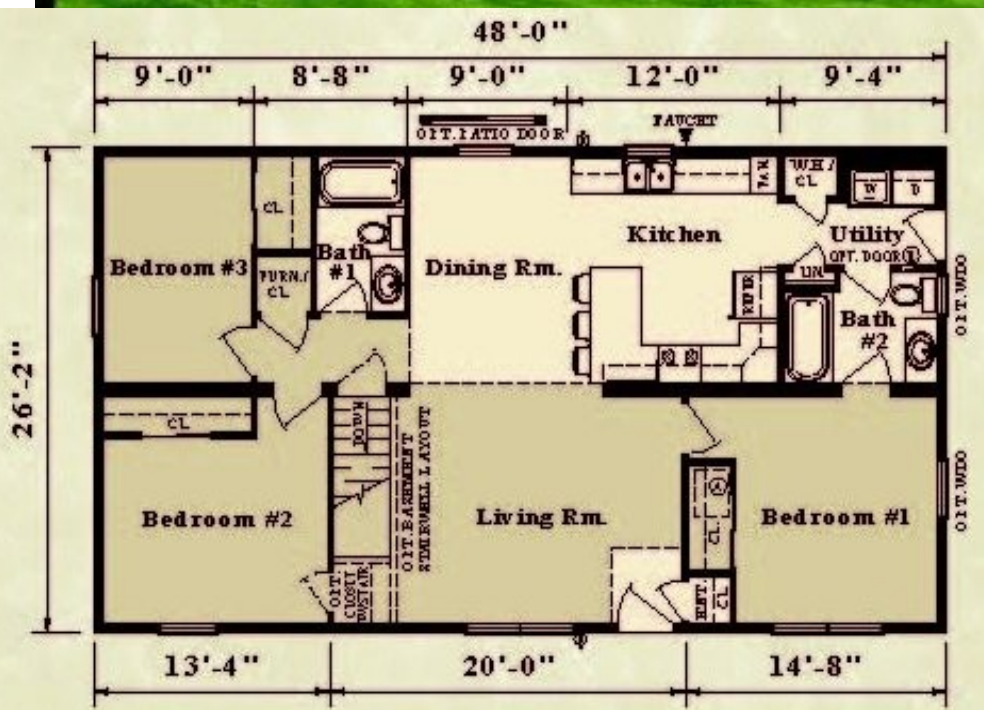


Spring 2013

FEATURED FLOOR PLAN

The Phoenix



Numerous amenities within this traditional 1,257 sf modular home Phoenix, 3 bedrooms, 2 bathrooms creates an attractive design. The living room, complete with optional fireplace, is the central entertaining area of your home. In your spacious kitchen, you will be able to prepare anything your guest desire. Complete with optional extra pantry (water heater closet) Open concept floor plan with extra cabinets space!

Drop ship option \$78,700 = \$62.61per SF!

9' high walls with R-21 insulation, R-50 attic insulation and 42" Cabinets.

With standard option drop ship \$70,000 = \$56.08 per SF!

www.ModularHomesMidwest.com

886-466-3629